



Bulk Pair Testing

Optimizing Field Testing
and Records Integrity



Optimizing Effort

■ Identification of Service

- Voltage Checks
 - DC Voltages
 - AC Voltages
 - Special Circuits
 - Noise
- Resistance Checks
 - Shorts
 - Grounds
- Open checks
 - Pair Length
 - Balance
 - Bridge Tap
- Assigned Number Retrieval

■ Additional Tests

- Loop Current
- Load Coils
- mW Reference
- Quiet Termination
- Spectral Plot



■ Pair Identification

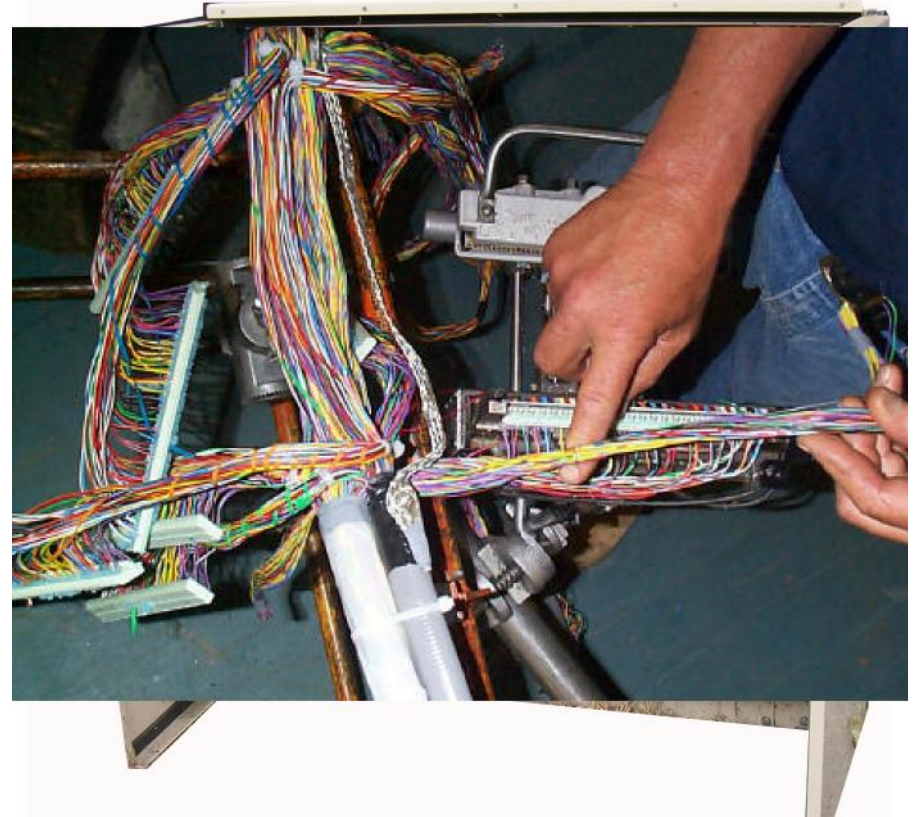
- Tone Generator
- Continuity Checks

■ Record Updates

■ Preventive Maintenance

Optimizing Test Time

- Multiple Pair Access
 - Connect 25 pair at a time.
- Identification of Service
- Point of Reference for Cable and Pair
 - Tone Generation
 - Tone Search
 - Pair Tagging
- Electronic Storage of Test Information



Tap Shoes Cinch Connector



Tap Shoes

3M 4320



Efficiency – Working Pair Test

Work Period	4	Hours	
Time to move shoe	5	Minutes	
Working Pair Test	1.70	Minutes	Per 25 Pairs
	DC Volts		
	Resistive Faults		
	Open Tests		
	Vacant Noise		
	Loop Current		
	Record all measurements		
Total Pairs Tested	875		

Efficiency – Vacant Pair Test

Work Period	4	Hours	
Time to move shoe	5	Minutes	
Vacant Pair Test	2.2	Minutes	Per 25 Pairs
	DC Volts		
	Resistive Faults		
	Open Tests		
	Vacant Noise		
	Record all measurements		
Total Pairs Tested	825		

Efficiency – Rapid Pair Test

Work Period	4	Hours	
Time to move shoe	5	Minutes	
Rapid Pair Test	0.4	Minutes	Per 25 Pairs
	DC Volts		
	Open Tests		
	Record all measurements		
Total Pairs Tested	1,100		

Efficiency – Other Test Times

Test	Pair Type	Time (1 pr) Sec	Time (25 pr) Min	Prs/4 hours	Prs/Hr
User (Spl ID, Loop Current, ANR, QT, mW)	POTS	35.00	14.58	306	77
User (vacant with loads)	Vacant	8.96	3.73	687	172
User (vacant w/ noise)	Vacant	5.28	2.20	833	208
Working	POTS	4.00	1.67	900	225
Vacant	Vacant	2.92	1.22	965	241
Rapid	Vacant	0.92	0.38	1115	279

Electronic Reports

The screenshot displays the 'ATV Tools' application window. The interface is divided into several sections:

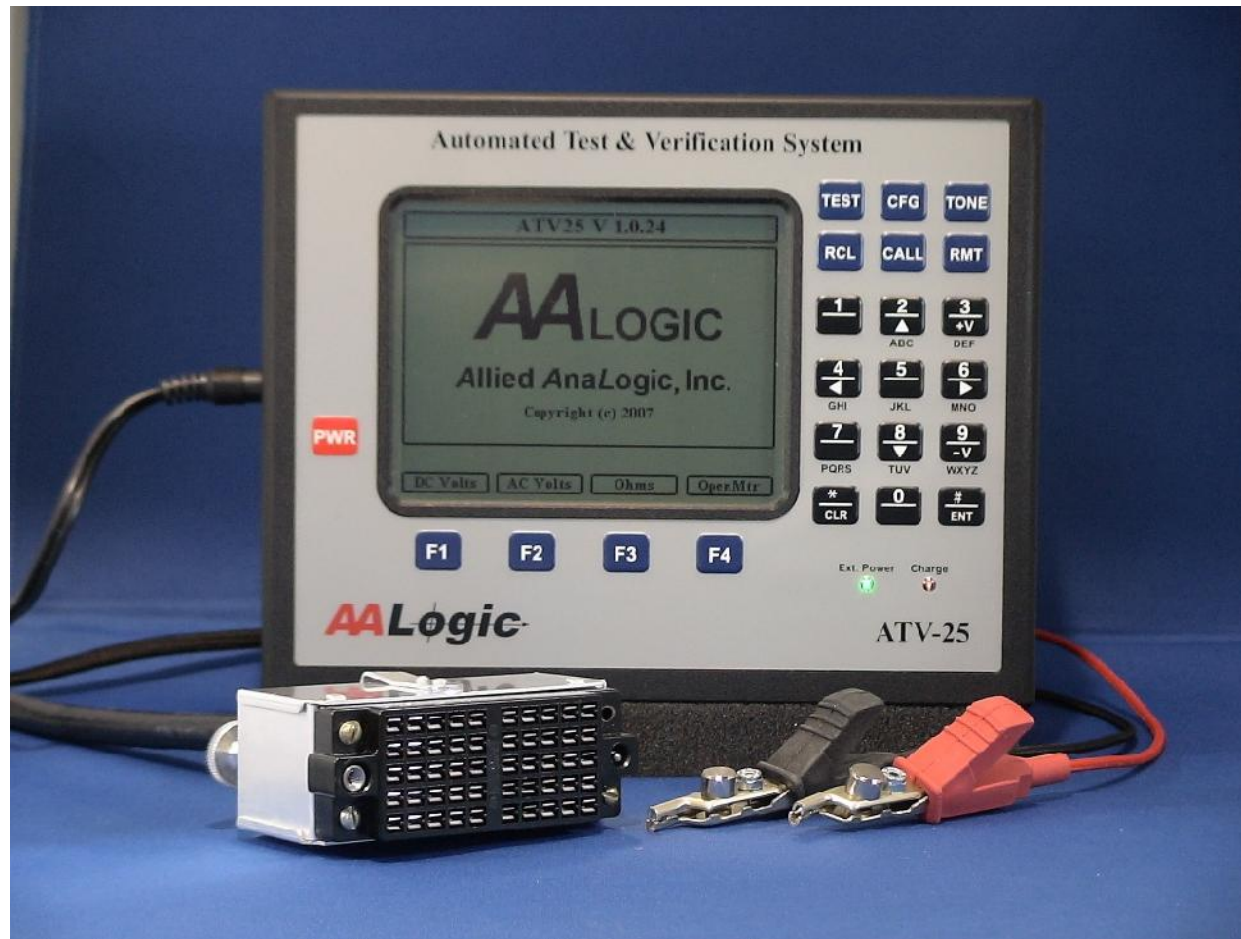
- Left Panel:** A tree view showing a folder 'WFD' containing a sub-folder '132 REDTAIL'. Below this are several time-stamped entries: '10/24/07 10:18:18', '10/25/07 10:01:15', '10/26/07 12:57:22' (highlighted), '10/26/07 13:09:19', and '10/26/07 13:24:03'. A vertical menu on the left includes 'Test Results', 'ATV Configuration', 'Test Configurations', 'Users', 'Locations', 'Central Offices', and 'Communication'.
- Summary Table:** A table with two columns: 'Pair' and 'Result'. It lists pairs 101 through 121 with their corresponding test results.
- Test Header Section:** Contains a 'Meters' table with columns for 'Meter', 'T-R', 'T-G', and 'R-G'. It lists 'Volts', 'Ohms', and 'Opens' with their respective values.
- Tests Section:** A table with two columns: 'Test' and 'Result'. It lists various tests such as 'Assigned Number', 'Load Coil Detection', 'Loop Current (mA)', 'Loss, mw Reference (dB)', 'Noise, Quiet Term (dBm)', 'Special Circuit ID', 'Vacant Noise, PI (dBm)', and 'Vacant Noise, TR (dBm)'.
- Spectral Plot Section:** A section for displaying a spectral plot, currently empty.
- Status Bar:** At the bottom, it shows 'ATV-25 Disconnected'.

Pair	Result
101	TR Noise
102	TR Noise
103	Vacant
104	Vacant
105	Short
106	Vacant
107	Vacant
108	Vacant
109	Vacant
110	Vacant
111	Vacant
112	Vacant
113	Open
114	Vacant
115	Vacant
116	Vacant
117	Vacant
118	Open
119	Vacant
120	Vacant
121	Tip Open

Meter	T-R	T-G	R-G
Volts	0.0	0.2	0.2
Ohms	> 10M	> 10M	> 10M
Opens	10.39	10.20	10.24

Test	Result
Assigned Number	----
Load Coil Detection	----
Loop Current (mA)	----
Loss, mw Reference (dB)	----
Noise, Quiet Term (dBm)	----
Special Circuit ID	----
Vacant Noise, PI (dBm)	0 dB
Vacant Noise, TR (dBm)	17 dB

ATV-25 Construction Test System



ATV-25 Applications

- Records Verification
- Bulk Pair Recovery
- Pair Identification/Tagging
- New Construction Verification
- Testing Conditioned Cable
- Preliminary Cable Fault Analysis





Questions and Answers





Copies of the Presentation

[Http://www.AALogic.com/atv25main/bpt/bpt.zip](http://www.AALogic.com/atv25main/bpt/bpt.zip)

Thank you